

# BATÁVIE

## STRATEGICKÁ INOVACE

Další vysvětlení kreativity a přidané hodnoty naší společnosti Batavia vám rádi poskytneme především na příkladech z posledních let.

- Batavia obecně vyrábí produkty, které jsou převážně elektrické (zahradní) nářadí, ale také nářadí pro dílny nebo automobilový průmysl.
- Jedná se většinou o jedinečné výrobky s jedinečnými prodejními argumenty, které přidávají hodnotu stávajícím výrobkům na trhu.
- Batavia vytváří produkty po intenzivních a pravidelných produktových schůzkách, kde se méně zaměřujeme na vytváření hlubší vrstvy stejných produktů, ale spíše na vytváření jedinečných produktů.
- Většinou se jedná o elektrické nářadí, které má oproti konkurenci velkou výhodu v tom, že se nikdy nejedná o přímou konkurenci, ale o něco zcela odlišného nebo o produkt, který se od stávajícího produktu výrazně liší.
- Naším nejnovějším a největším úspěchem je naše **kompaktní řetězová pila 18 V**.
- Ukážeme vám pěkný přehled „speciálních nabídek“, které jsme v průběhu let vytvořili, abyste získali dobrý dojem o neutrální konkurenci a také pozitivním stavu JAKÉKOLIV KATEGORIE/STRATEGIE ROZSAHU.
- Batavia přidává produktovou kompetenci a výhody pro uživatele, zejména v kategoriích zahradnictví a domácího kutilství, a vždy se liší od toho, co je k dispozici na trhu.
- Naše řízení kategorií se zaměřuje spíše na širší a působivé nové produkty s přidanou hodnotou, které odpovídají naší distribuční síti, než na variace modelů/specifikací v jedné malé kategorii.
- K růstu a rozšíření vašeho úspěchu rozhodně přispějí naše **pozitivní a progresivní produkty**, přičemž se nyní více zaměřujeme na **produkty napájené bateriemi**.
- Batavia má relativně vedoucí postavení na evropském trhu v oblasti zavádění inovativních produktů v kombinaci s vynikající kvalitou.

- NEXXSAW, kompaktní řetězová pila ovládaná jednou rukou
- TWIN DRILL, vrtačka s dvojitým sklíčidlem
- BLUCAVE, úložný systém - bedna na nářadí s bluetooth reproduktorem
- MAXXHEAT, kombinovaná horkovzdušná pistole
- MAXXSAW 18V akumulátorová ponorná pila
- TRANSFORMER, první pracovní stůl/žebřík
- MAXXFIRE, akumulátorový zapalovač na gril
- FLASHCELL, akumulátorový šroubovák

- TWIN BRUSH, akumulátorový čisticí stroj
- MULTITOO, 10,8 V
- BLUCAVE, jeden 230V ovladač + více nástrojových krytů
- FLIP OUT, 7,2V šroubovák
- MAXXWEAR, multifunkční nástrojové hodinky,
- teleskopický žebřík a nástrojová deska
- TOUCH DRILL, 12 V s dotykovým senzorem
- A mnoho dalších, jak uvidíte na následujících stránkách

**Batavia má další nové novinek!**

### NEXXSAW –18V KOMPAKTNÍ ŘETĚZOVÁ PILA

- Všechny online a offline obchody, DIY i profesionální, rozšířily v posledních 3 letech svou zahradní řadu o bezdrátovou kompaktní/mini řetězovou pilu.
- Když společnost Batavia v roce 2018 na veletrhu GAFA oznámila vývoj této kompaktní řetězové pily - NEXXSAW -, trh projevil zájem a sympatie k tomuto nápadu.
- Na začátku září 2019 jsme představili finální produkt na veletrhu Gafa Show v Kolíně nad Rýnem jako první bezdrátovou řetězovou pilu na světě, kterou lze ovládat jednou rukou, a o dva týdny později jsme zahájili její uvedení na trh v Německu.
- Prodej byl okamžitě úspěšný a bylo jasné, že jsme vytvořili něco naprosto skvělého a užitečného pro uživatele, kteří provádějí prořezávání a řezání. Zejména výkonný 18V, který umožňuje flexibilitu při práci venku, byl pro uživatele silným argumentem a navíc naše prodlužovací tyč pro vysoké prořezávání/řezání ještě vylepšila funkčnost.
- V listopadu 2019 pak značka zahradního nářadí Stihl® představila svůj kompaktní řetězový pilový model s napětím 12 V. Oficiálně se jedná o model pro obouruční ovládání s nižším výkonem baterie a bez možnosti prodloužení tyče. Skutečnost, že dvě inovativní značky měly podobný nápad, který však realizovaly odlišným způsobem, vzbudila pozornost ze všech stran.
- Jak Stihl®, tak Batavia® získaly na tento produkt duševní vlastnictví, což potvrzuje jejich kreativitu.
- Jako obvykle se úspěch kopíruje a netrvalo dlouho, než se na trhu objevily první kopie. Výjimkou byla kompaktní řetězová pila Milwaukee M12fuel®, která se možná inspirovala, ale byla uvedena na trh jako upravený profesionální model, který není určen pro spotřebitele/kutilské publikum.
- Mezitím konkurence uvedla na trh doslova stovky různých modelů téměř všech značek a desítky dalších asijských továren se rozhodly přidat tento produkt do svého sortimentu, přičemž v mnoha případech nedodržovaly naše duševní vlastnictví ani platné bezpečnostní normy EU.
- ě více než 25 let praxe našeho generálního ředitele Henka van Ommena se tento produkt stal nejrychleji kopírovaným elektrickým/zahradním nářadím v historii. Mohli bychom jej v tomto ohledu nazvat držitelem světového rekordu, ale raději jej označujeme jako ORIGINÁL.
- Jak můžete vidět na přiložených obrázcích, již v roce 2019 jsme zmínili, že se stane jednorozcem, což byla rozhodně vize, která se stala skutečností.
- Vzhledem k tomu, že počet napodobitelů se stal tak velkým, museli jsme se jako Batavia rozhodnout, zda zablokujeme všechny kopie, nebo se soustředíme na naši běžnou činnost, abychom se vyhnuli odklonu od DNA naší společnosti, která je: **vývoj, marketing a prodej**. Tuto DNA jsme si zvolili, aby společnost Batavia mohla již nyní hledět do budoucnosti a opětovně přidávat hodnotu na trhu způsobem, který jsme popsali výše: prosperovat díky inovacím s vizí, inovativní síla je naší kvalitou.

# BATÁVIE

## NEXXSAW



Gafa Show 2019 Cologne - lots of nice feedback on our products and the NexxSaw is an absolute upcoming Unicorn/hero! #products #gafa #unicorn

[Vertaling weergeven](#)



IP



ZAHÁJENO V  
ZÁŘÍ 2019



O 2 měsíce později: Stihl



2020: Milwaukee



> 2020, dobrá inspirace pro všechny druhy modelů

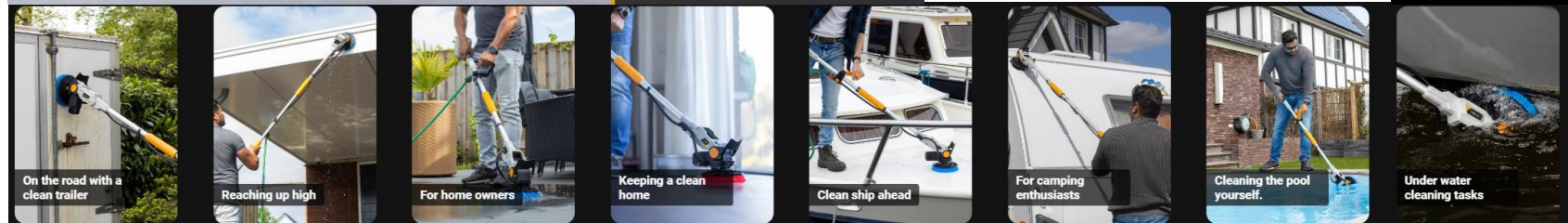


# BATÁVIE

## TWINBRUSH 18V

### SVĚTOVÁ NOVINKA BEZDRÁTOVÝ S DVOJÍ FUNKCÍ ČISTÍCÍ KARTÁČ

UVEDEN NA TRH  
ZÁŘÍ 2022



On the road with a clean trailer

Reaching up high

For home owners

Keeping a clean home

Clean ship ahead

For camping enthusiasts

Cleaning the pool yourself.

Under water cleaning tasks

BATÁVIA  
TOOLS TO BUILD

## TWIN BRUSH

### 18V Maxxpack Collection

Powerful cordless scrubber with patented 2-in-1 counter rotating brushes

Brushless motor for best-in-class cleaning results and outstanding performance

Perfect for cleaning terraces, pavements, houses, campers, pools, boats, and more!

IPX7 - 100% waterproof design

Including a secured water hose connection

Flexible brush head between -15° and +90°

BATÁVIA

## TWIN BRUSH

### 18 V Maxxpack collection

The Batavia Twin Brush, the latest cleaning innovation. The Twin Brush is a powerful 18V scrubber, which is perfect for cleaning terraces, pavements, houses, campers, boats, and more. What makes the Twin Brush special, are the patented counter rotating brushes. This gives you more control over the scrubber, and you can clean surfaces faster, easier, and better. This patented feature also gives you the opportunity to choose between a fixed or a moveable brush head, between an angle of -15° and 90°. This, combined with a second handle and a strong and long aluminum steel, creates a better and more comfortable working position and enables intensive usage. For an even better cleaning performance, you can add a water hose to the Twin Brush. This water hose connection provides a secured auto-water feed, which sprays the water within the brush. This creates the best possible cleaning results. The Twin Brush also has a IPX7 rating, thanks to the waterproof design and the battery cover. This way you can even use Twin Brush underwater. The Twin Brush standard comes with a medium (blue) brush. If you need a soft (black) brush for delicate work or a hard (red) brush for the most persistent dirt, you can get these brushes as an accessory. There is also an additional extension pole available, to reach high areas. The Twin Brush is part of the Maxxpack collection. Within the Maxxpack collection, you can use a great variety of tools, with only one battery and charger.



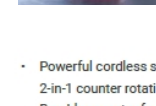
Technical information	
Battery voltage:	18 V Li-Ion
No load speed outer disk:	200 rpm
No load speed inner disk:	400 rpm
Level of water proof:	IPX7



**SOFT BRUSH**  
Perfect for boats, caravan/ campers, tiles, metal surfaces, mobile homes, and many more



**MEDIUM BRUSH**  
Perfect for boats (ceramic) indoor and outdoor tiles, outdoor furniture, wooden decks walls, floors, and many more.



**HARD BRUSH**  
Perfect for bathrooms (ceramic) indoor and outdoor tiles, outdoor furniture, wooden decks walls, garage doors and many more.

- Powerful cordless scrubber with patented 2-in-1 counter rotating brushes
- Brushless motor for best-in-class cleaning results and outstanding performance
- Perfect for cleaning terraces, pavements, houses, campers, pools, boats, and more!
- 100% waterproof design with garden hose connection
- Flexible brush head between -15° and +90°



PATENTED  
2-IN-1 COUNTER  
ROTATING BRUSHES

# BATÁVIE

## 18V MINI PŘÍČNÁ PILKA A PŘÍSLUŠENSTVÍ PRO ÚHELNOU ZÁKLADNU

SVĚTOVÁ NOVINKA  
BEZDRÁTOVÁ MINI POKLOPNÍ PILA

A  
UNIKÁTNÍ ÚHLOVÁ ZÁKLADNA  
PRO MINI PILU

UVEDENÁ NA TRH  
2009 a 2011



BATAVIA

Cordless Circular saw

### CORDLESS SPEED SAW

Lithium-Ion Circular Saw 18 Volt - 1,35 Ah

As powerful as if powered  
through a mains socket



**Product Description:**

As powerful as if powered through a mains socket. 7000 rpm for the perfect cut. The circular saw can be used for the most diverse jobs. Whether laying laminate, parquet, tiles, or other floor coverings, for smaller metal workings, for cable channelling in interior walls, sanitary work, copper and plastic pipe cutting and in many other ways. The infinitely variable depth control from 0-12 mm allows on-site sawing, even on the floor, without damaging the surface.

**Technical Data:**

Li-Ion rechargeable battery 18 V  
Battery capacity: 1.35 Ah  
Maximum cutting depth: 12 mm  
No load speed: 7000 min<sup>-1</sup>  
Saw blade diam. approx. 51 mm

**Delivery Includes:**

1 HM blade with 18 teeth  
1 HSS blade with 60 teeth  
Rubber dust-extractor with cloth bag  
In a case

**Logistical Data:**

EAN Code: 405025000306  
Quantity Box: 2 Pieces  
Quantity Pallet: 60 Pieces  
Quantity FCL 20': 1600 Pieces  
Quantity FCL 40': 3200 Pieces  
Weight: approx. 1.5 kg

**Certificates:**

CE, GS, EMC, RoHS, PAHS, REACH

Item-No: 7045891

BATAVIA  
TODAYS SOLUTIONS



www.batavia.eu



Vorher:



HEUTE:

MADMAXX  
Multi Tauchkreissäge



einzigartigen Gehrungsbasis



MadMaxx

Die praktische **600 Watt Tauchkreissäge** von Batavia schneidet alle Holzböden sowie Fliesen, Kunststoffe, diverse Metalle und weitere Materialien. Die Tauchkreissäge kann für viele Aufgaben verwendet werden, mit und ohne Gehrungsbasis.

Mit seiner **einzigartigen Gehrungsbasis** und dem **Parallelanschlag** für kontinuierliche Längsschnitte ist sie ideal für Bodenbeläge. Die einfache Schnitttiefeinstellung erlaubt einen exakten Tauchschnitt in einer vorher festgelegten Schnitttiefe.

Die spezielle Schnelleneinstellung der Schnitttiefeinstellung hat eine **deutliche Schnitttiefeanzeige** durch Pfeilskalierung. Offene Sichtschlitze sorgen jederzeit für einen klaren Blick auf das Blatt und den Sägeschnitt.

Das Werkzeug hat eine effiziente **Staubabsaugung** für eine saubere Arbeitsfläche. Um eine einfache und sichere Betätigung zu gewährleisten, sind die Einregelungs-Schutzkappe und die Schalterbedienung optimal positioniert. In perfekter Aufbewahrungstasche.



Batavia, Bienenstein 180, 784375 Muggel  
Tel: 0522-830200 / Email: info@batavia.eu

WWW.BATAVIA.EU

# BATÁVIE

## 10,8V OSCILUJÍCÍ MULTIFUNKČNÍ NÁŘADÍ

### PRVNÍ NA SVĚTĚ BEZDRÁTOVÝ MULTIFUNKČNÍ NÁSTROJ

UVEDENO NA TRH V ROCE  
2009



## 10.8 V LI-ION MULTITOOL

In nylon bag with extra accessories  
Ideal for sawing, cutting, grinding, trimming and sanding

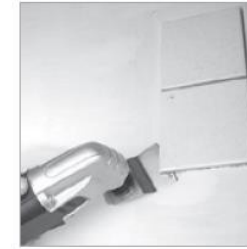


### 10.8 V Li-Ion Multitool

This high-speed tool lets you work effectively and accurately thanks to the **high performance oscillating speed** and the **powerful 10.8 V Li-Ion rechargeable battery**. The **versatile accessory kit** offers a wide range of application for a variety of different materials. Because of the **easy handling** and the **little weight** it is also perfect for hard to reach areas. The **rubberised handle** enables tireless working.

BATAVIA MULTITOOL

10.8 Volt Li-Ion Multitool



### Technical Data:

Charger input: 230 V~, 50 Hz  
Charger output: 12 VDC, 400 mA  
Battery: 10.8 V Li-Ion, 1300 mAh  
Charging voltage: 12.6 V  
No load speed: 15000/min<sup>-1</sup>

### Delivery includes:

1x Multitool  
1x Stainless steel sanding pad, 1x Straight saw blade  
1x HSS saw blade, 1x Stainless steel spade  
7x G60 Sanding paper, 7x G80 Sanding paper  
1x Wrench, 1x Flange  
1x Carbon brush set, 1x Charger, 1x Dust connector  
Incl. universal accessory connection, in nylon bag

### Logistical Data:

EAN Code: 4050255006186  
Quantity Box: 4 Pieces  
Quantity Pallet: 240 Pieces  
Quantity FCL 20": 6600 Pieces  
Quantity FCL 40": 13936 Pieces  
Weight: 2 kg

### Certificates:

CE, GS, RoHS, PAHS, REACH, FFU Tested

Item-No: 7050776

### Available accessories



Saw blade half circular  
Item-No: 7050933



Stainless steel spade  
Item-No: 7050883



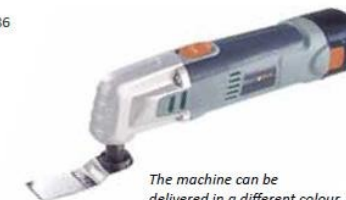
Saw blade  
Item-No: 7050909



Sanding paper assortment  
Item-No: 7050958

Battery for Multitool  
Item-No: 7050990

Charger for Multitool  
Item-No: 7051006



BATAVIA  
TODAYS SOLUTIONS



www.batavia.eu

# BATÁVIE

## 18V DVOJITÁ VRTAČKA

PATENTOVANÉ  
AUTOMATICKÉ  
NASTAVENÍ  
RYCHLOSTI

UVEDENO NA TRH  
2009 A 2021



#### Product Description:

The Worlds First 18 V Li-Ion power Twin Drill has 6 torque settings 18 Volt/1.3 Ah li-ion rechargeable battery, rapid drill chuck with single-handed locking, incl. 12-piece bit and drill assortment, quick-docking station for battery charging in just 1.5 hours. This innovative Twin Drill offers you 22-speed with lithium-ion technology, which means you can now combine drilling and screwing in one tool. With a single twist of the wrist you change it from a drill to a screwdriver. End the need to spend time opening the chuck to replace the drill bit with the bit holder. Due to the torque control, drilling even hard materials is child's play. The 2-speed automatic gearbox allows you to change speed and power transfer, depending on whether you want to drill or drive screws.

#### Technical Data:

Voltage: 18 V/1.3 Ah Lithium-Ion  
Speed: 1st gear 0-230 rpm, 2nd gear 0-850 rpm  
Vertical drill chuck for hexagonal shanks  
Drill chuck 1-10mm  
11-stage torque adjustment

#### Includes:

6 Bits (2 each slit head, PZ and PH)  
6-piece drill bit-set, bit holder  
Battery charger  
In case

#### Logistical Data:

EAN Code: 4050255000283  
Quantity Box: 5 Pieces  
Quantity Pallet: 50 Pieces  
Quantity FCL 20': 1600 Pieces  
Quantity FCL 40': 3200 Pieces  
Weight: 3.8 kg

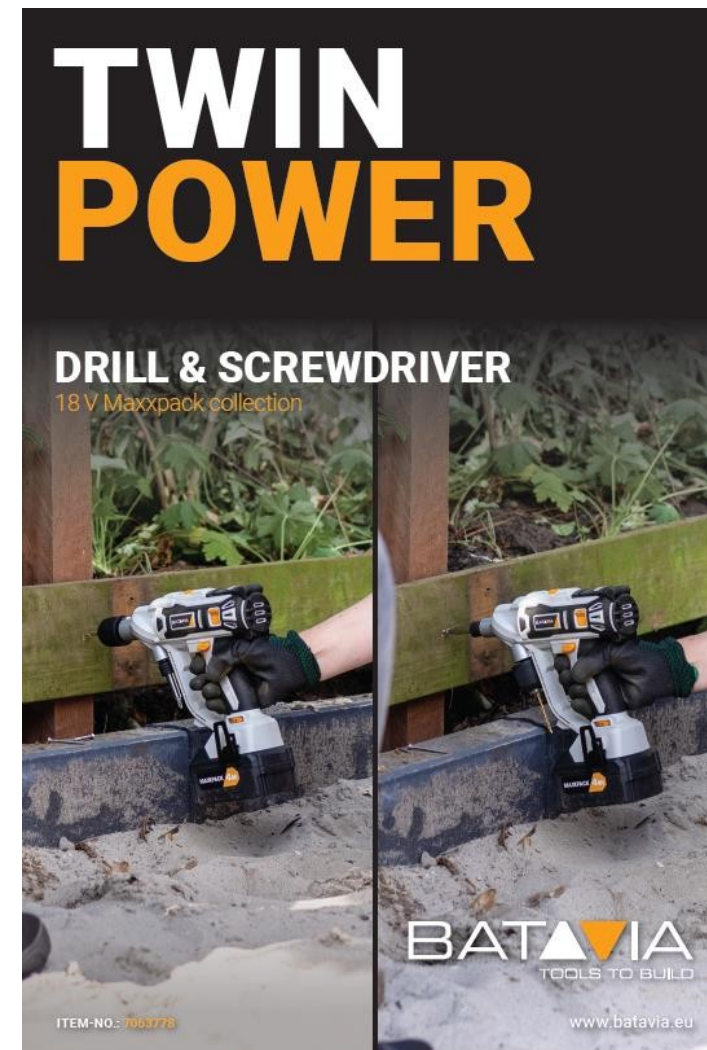
#### Certificates:

CE, GS, EMC, RoHS

Item-No: 7045750

BATAVIA

2021



# BATÁVIE

## 4,6V FLASHCELL ŠROUBOVÁK

NEJRYCHLEJŠÍ BEZDRÁTOVÝ ŠROUBOVÁK NA SVĚTĚ:

PLNĚ NABITÝ  
ZA POUHÝCH 45 NEBO 60 SEKUND

UVEDEN NA TRH  
V ROCE  
2011



DUO AKKUSCHRAUBER  
FLASH CELL



Descripción del Producto:  
Tecnología Flash Cell™ patentada. Tiempo de recarga de sólo 45 segundos. Control perfecto. Se acciona y desacciona al cargar con una sola mano. Su pequeño peso y un fácil acceso al interruptor permiten un control óptimo. El modo de ahorro se modifica rotando la parte superior del aparato. Un indicador LED indica la extremadamente rápida velocidad de recarga. La linterna incluida puede ser usada durante tres horas con una carga. Cinco potentes bombillas LED para un óptimo uso. Otra bombilla LED emite al lugar de trabajo para mejorar la función de taladro. La linterna de tiempos led se puede cambiar en tres pasos.

BATAVIA DUO

4.6 V Cordless Screwdriver - Flash Cell

### DUO

Cordless Screwdriver - Flash Cell

Charged in  
Aufgeladen in  
Opgeladen in  
Charger dans

**60** seconds  
Sekunden  
seconden  
secondes

**300** /hour  
/Stunde  
/uur  
/heure

FLASHCELL  
TECHNOLOGY



Environmental friendly  
when compared to Li-Ion  
and NiMH

DUO

Flash Cell Screwdriver with new capacitor technology

Perfect control system: one handed charger release

Easy access of switches provides optimum control

Twist handle function to straight screwdriver from pistol grip screwdriver

LED light charger indicator displays charging speed

BATAVIA  
TODAYS SOLUTIONS



www.batavia.eu

# BATÁVIE

## FLOORMASTER

PRVNÍ LAMINÁTOVÁ  
ŘEZÁK S DVOJITÝM  
NOŽEM NA SVĚTĚ

UVEDEN NA TRH  
V ROCE  
2009

FLOORMASTER  
Very suitable for PVC laminate!



#### Floormaster

A new light and easy way to cut laminate, wood veneer, cork, PVC etc without the need of electric or cordless power. The Floormaster can cut up to 12 mm thick materials.

It can also be used for diagonal cuts cutouts, and longer lengths of materials. The machine comes with "twin blade cut" ensuring a quick, accurate and precise cut allowing for greater control whilst in operation.

Its mechanism is ideal for longitude cuts. The handle is light and has a grip comfort grip for optimum handling for a flow motion cut.

BATAVIA FLOORMASTER

Laminate Cutter



#### Technical Data:

Cutting thickness: 12 mm

#### Delivery includes:

1x Floormaster  
In colour box

#### Logistical Data:

EAN Code: 4050255006667  
Quantity Box: 1 Pieces  
Quantity Pallet: 60 Pieces  
Quantity FCL 20": 2312 Pieces  
Quantity FCL 40": 4726 Pieces  
Weight: 4.6 kg

#### Certificates:

FFU Tested

Item-No: 7051642

#### Available accessories

2x Saw blade for Floormaster  
Item-No: 7053705

#### Floormaster

- Twin Saw Blade System
- Ratchet System
- Easy to use with minimal effort
- No noise

BATAVIA  
TODAYS SOLUTIONS



www.batavia.eu

# BATÁVIE

## MOBILNÍ VOZÍKOVÝ STŘIKACÍ PISTOLE

PRVNÍ NA SVĚTĚ PRO SVÉPOMOCNÉ  
ŘEMESLNÉ MOBILNÍ NÁSTŘIKY

UVEDENÝ NA TRH  
2011

### HVLP Electric Paint Sprayer



LGAP  
tested

CE GS



Perfect design,  
no pre-painting  
required

3 Meter air hose

#### HVLP Paint Sprayer

The HVLP Paint Sprayer is designed for everyone, from entry-level painters, frequent decorators or DIY enthusiasts. The spray gun is easy to operate, and there is less time and effort when compared to working with a traditional roller and paint brush.

Provides precise application of paint on edges and in corners leaving a smooth non grain finish. Gives a fast, professional finish with no brush marks.

No pre-painting required. The high volume low pressure spraying technology allows you to spray accurately and effortlessly ensuring a professional finish.

The 700 Watt motor supplies the spray gun with constant airflow which maintains a consistent flow of paint.

The HVLP paint spray comes with a telescopic handle and it is on wheels which makes moving it easy. It also contains hooks for winding up the power cord.

Compact, versatile and  
easy to use

BATAVIA HVLP

Mobile Paint Sprayer



#### Technical Data:

Power: 700 Watt  
Spraying pressure: 0.2 - 0.3 bar  
Delivery rate: 0 -100 g/min  
Nozzle: 2.5 mm  
Air hose length: 3 m  
Container volume: 0.8 liter

Delivery includes:  
1 x HVLP Paint Spray Gun  
In carton box

#### Logistical Data:

EAN Code: 4050255010305  
Quantity Box: 1 Piece  
Quantity Pallet: 30 Pieces  
Quantity FCL 20": 756 Pieces  
Quantity FCL 40": 1548 Pieces  
Quantity FCL 40"HQ: 1737 Pieces

Certificates:  
CE, GS, EMC, RoHS, PAHS

Item-No: 7059652



BATAVIA  
TODAY'S SOLUTIONS



www.batavia.eu

# BATÁVIE

## RTOSANDER

PRVNÍ DVOJITÁ DELTA  
BRUSKA NA SVĚTĚ

UVEDEN NA TRH  
2011

### RTOSANDER

Delta Sander with turnable Sanding Head



#### Rotosander

- With two Handle Positions, horizontal and vertical
- Ideal for Sanding Corners, Edges or hard to reach Areas
- Ergonomic Design
- Powerful 300 W Motor
- Dust Extraction via Base Plate for clean Work
- Speed Regulator
- Quick Sanding paper Change with Hook and Loop System
- Accessories included

BATAVIA ROTOSANDER

Delta Sander



Technical Data:  
Nominal Voltage: 230 V~, 50 Hz  
Nominal Power: 300 W  
No Load Speed: 6000 - 10000 min<sup>-1</sup>  
Triangular Sanding Plate: 90 x 90 x 90 mm  
Cable length: 3 m  
Weight incl. color box: 1.94 kg

Delivery includes:  
1x Rotosander  
1x Dust Collection Hose  
Sanding Paper

Logistical Data:  
EAN Code: 4050255019667  
Quantity Box: 10 Pieces  
Quantity Pallet: 180 Pieces  
Quantity FCL 20": 3960 Pieces  
Quantity FCL 40": 8520 Pieces

Approvals/Certificates:  
CE, ROHS, PAHS

Item-No: 7061488



BATAVIA  
TODAYS SOLUTIONS



[www.batavia.eu](http://www.batavia.eu)

# BATÁVIE

## STEAMBOXXER

### EVROPSKÝ PRVNÍ PARNÍ

-ODSTRAŇOVAČ PLEVELE  
-ČISTÍCÍ STROJ  
\*UNIKÁTNÍ VIDLICE

UVEDENO NA  
TRH V ROCE  
2014



# BATÁVIA

MULTI-PURPOSE!  
For garden & home



1500 Watt

4 bar

2 L

170 °C

## STEAMBOXXER

### Steam weed killer + Steam cleaner

- ▶ Powerful compact weed killer and steam cleaner in one, for indoor and outdoor use.
- ▶ Destroy weeds quickly and easily with specifically designed accessories for outdoor use; Steam breaks the cellular structure of the weeds right down to the roots, which destroys the weeds.
- ▶ Eco-conscious solution for quickly destroying weeds.
- ▶ Perfectly suited for the control of weeds, removal of dirt (BBQ), chewing gum and stains on the pavement.
- ▶ With practical accessories for indoor use; easily and hygienically clean the whole house, without using detergents.



TOOLS TO BUILD

# BATÁVIA



## STEAMBOXXER

### TECHNICAL INFORMATION

Rated voltage and frequency:	230 - 240 V~ 50 Hz
Rated power:	1500 W
Cable length:	2.0 m
Tank:	2 L
Pressure:	4 bar
Max. temperature in tank:	170 °C
Hose length:	1.65 m

### Delivery includes:

1x SteamBoxxer  
3 pcs weed killer set  
8 pcs home steam set

### Certificates:

CE, GS, RoHS, PAHS, REACH

### LOGISTICAL DATA

Quantity Export Carton:	1 Piece
Quantity Pallet:	32 Pieces
Quantity FCL 20ft:	575 Pieces
Quantity FCL 40ft:	1180 Pieces
Gross Weight:	6.0 kg
Item-No:	7062054
EAN Code:	4050255025040



WWW.BATAVIA.EU

# BATÁVIE

## CROC SAW

EVROPSKÝ  
PRVNÍ 230V  
ŘETĚZOVÁ PILA  
„CUTTER“

UVEDENÁ NA TRH  
V ROCE 2014



 <b>600 W</b>
 <b>4500/min<sup>-1</sup></b>
 <b>8 m/s</b>
 <b>203 mm</b>

### CROC SAW

#### Electric Chainsaw 600 W

- ▶ Large cut opening *grab and cut in one easy motion*
- ▶ Operating handle *for maximum control and effortless cutting.*
- ▶ 20 cm Bar *for up to 10 cm cutting capacity*
- ▶ Automatic chain oiler *with oil level indication*
- ▶ Powerful 600W motor

TOOLS TO BUILD

BATAVIA

## CROC SAW

### TECHNICAL INFORMATION

Rated voltage and frequency:	230 – 240 V~ 50 Hz
Rated power:	600 W
No load speed:	4500 min <sup>-1</sup>
No load chain speed:	8 m/s
Bar length:	203 mm

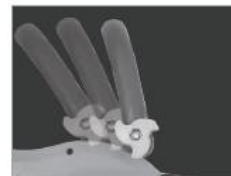
Delivery includes:  
1x Croc Saw  
In carton box

### LOGISTICAL DATA

Quantity Export Carton:	2 Pieces
Quantity Pallet:	36 Pieces
Quantity FCL 20ft:	770 Pieces
Quantity FCL 40ft:	On request
Gross Weight:	3.8 kg
Item-No:	7062040
EAN Code:	4050255024791



▶ 20 cm Bar



▶ Operating handle



WWW.BATAVIA.EU

# BATÁVIE

## MAXXHEAT 3-1

PRVNÍ 230V KOMBINACE NA SVĚTĚ:

- ODSTRAŇOVAČ PLEVELE
- TEPELNÁ PISTOLE
- ZAPALOVAČ NA GRIL

UVEDENO NA TRH V ROCE 2015

**CLICK...  
HOT AIR GUN  
CLICK...  
WEEDER  
CLICK...  
BBQ LIGHTER**

**MAXXHEAT**  
3-in-1 Heater



**BATÁVIA**  
TOOLS TO BUILD

ITEM-NO.: 7062420

www.batavia.eu

**BATÁVIA**

## MAXXHEAT

### 3-in-1 Heater

Safe and environmental friendly

The Maxxheat is the home and garden tool: a multifunctional electric weed killer with detachable pole. But the Maxxheat is more: you simply change this weed killer in a powerful hot air gun or in a safe and fast barbecue lighter. A 3-in-1 combi-tool! With the click&go pole, the unique rotatable handle and specially designed nozzles, the Batavia Maxxheat is a multifunctional innovation.

- Easy and fast: Destroys weed by heating in only 5 seconds.
- Powerful hot air gun: with three temperature settings up to 600 °C
- Safe: also suitable as a safe and fast barbecue lighter
- Complete: includes four specially designed nozzles and click&go pole



no gas



no chemicals



no flames



50 °C / 600 °C



### PRODUCT INFORMATION

Technical information	MAXXHEAT
Rated voltage and frequency:	230 – 240 V~ 50 Hz
Rated power:	2000 W
Cable length:	1.8 m
Temperature Setting 1:	50 °C
Temperature Setting 2:	400 °C
Temperature Setting 3:	600 °C
Air flow:	500 L/min
Product weight without accessories:	1,3 kg (with extension handle)
Product dimensions (L x W x H):	38,5 – 106 x 7 x 14 cm
Delivery includes	
	Maxxheat
	Ring-nozzle for weed control
	Nozzle for BBQ / fireplace
	2x Nozzle for paint removal
	Extension handle (2 parts)
Certificates	CE, GS, RoHS, PAHS, REACH
Logistical data	
Item-No.:	7062420
EAN:	4050255029260
Dimensions unit packaging (L x W x H):	45,7 x 10,8 x 17 cm
Gross weight unit packaging:	1,7 kg
Quantity / Export carton:	4 pcs
Dimensions export carton (L x W x H):	47,5 x 45,5 x 19 cm
Gross weight export carton:	7,5 kg
Quantity / Pallet:	92 pcs
20'GP:	2900 pcs
40'GP:	6000 pcs



**2 YEARS WARRANTY**



www.batavia.eu

# BATÁVIE

## 7,2V SKLÁPĚCÍ ŠROUBOVÁK

PRVNÍ V EVROPĚ  
ŠROUBOVÁK  
SPÍNAČ – ÚHLOVÝ REŽIM

UVEDEN NA TRH  
2015

# PERFORM AT AN ANGLE OF 124.8 DEGREES

## FLIPOUT

Multi angle screwdriver 7.2 V



ITEM-NO.: 7062267

BATÁVIA  
TOOLS TO BUILD

www.batavia.eu

# BATÁVIA

## FLIPOUT

Multi angle screwdriver 7.2 V

The solution for screws in hard to reach places. Screws in as many as 392 positions. The Flipout 7.2 V Li-Ion multipoint cordless screwdriver: an indispensable all-rounder for all screw jobs in and around the home, car or workplace. Can also be used as a cordless angle screwdriver.

- Ideal for hard to reach places
- Unique 360° adjustable head
- 380 positions
- LED work light
- Accessories and holster included



230 V



5 Nm



0 – 175 min<sup>-1</sup>



1 hour



www.batavia.eu

Technical information	
Battery:	7.2 V Li-Ion, 700 mAh
Input charger:	230 – 240 V~ 50 Hz, 0.35 A
Output charger:	8.6 V, 1 A
No load speed:	0 – 175 min <sup>-1</sup>
Adjustable head:	360°
Working positions:	380
Work light:	LED
Battery work light:	CR927
Charging time:	1 hour
Product weight without accessories:	0.53 kg
Product dimensions (L x W x H):	22.5 x 5.8 x 3.4 cm
Delivery includes	
	Flipout
	19 pcs accessories and holster included
Certificates	
	CE, RoHS, PAHS, REACH
Logistical data	
Item-No.:	7062267
EAN:	4050255027525
HS code:	8467 2990
Dimensions unit packaging (L x W x H):	22 x 21 x 7 cm
Gross weight unit packaging:	0.96 kg
Quantity / Export carton:	10 pcs
Dimensions export carton (L x W x H):	53 x 24 x 16 cm
Gross weight export carton:	9.1 kg
Quantity / Pallet:	530 pcs
20'GP:	12000 pcs
40'GP:	23000 pcs

BATÁVIA  
TOOLS TO BUILD

# BATÁVIE

## TELESKOPICKÉ ŽEBŘÍKY

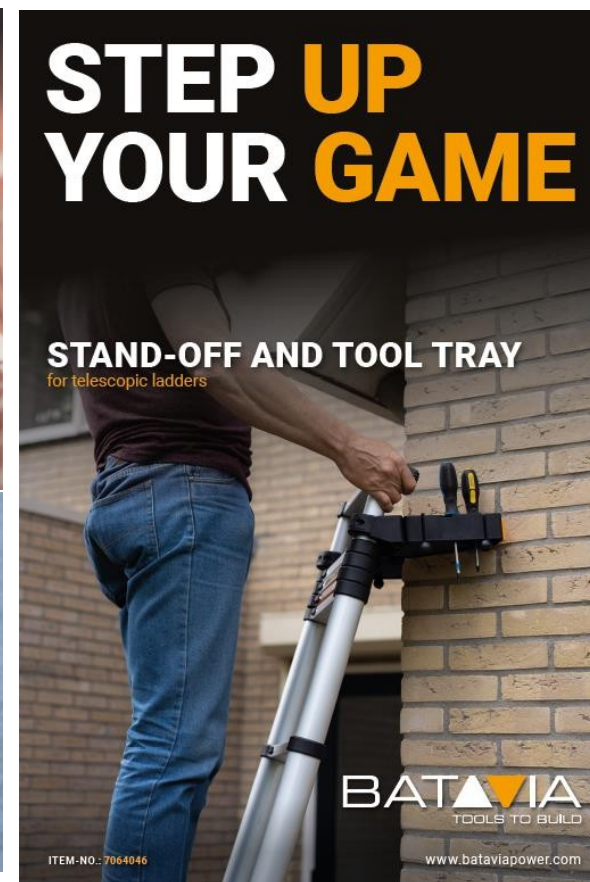
### UKAZATEL ÚHLU - NÁSTROJOVÁ DESKA 3-1

SVĚTOVÁ NOVINKA  
INDIKÁTOR BEZPEČNÉHO ÚHLU

STOJAN - ZÁSOBNÍK  
KOMBINACE PRO ŽEBŘÍKY

- JAKO NÁSTROJOVÁ DESKA
- PRO STABILITU VNITŘNÍCH/  
VNĚJŠÍCH ROHŮ

UVEDENO NA  
TRH 2020/2022



# BATÁVIE

## TRANSFORMÁTOR 4-1

SVĚTOVÁ NOVINKA  
KOMBINACE:

- ŽEBŘÍKU
- A PRACOVNÍHO STOLU

UVEDENO NA  
TRH V ROCE  
2017



### BATAVIA

## TRANSFORMER Workbench and step ladder

The Transformer multifunctional workbench is a robust workbench, sturdy and safe step ladder with very large standing surface in one product.

- Sturdy and safe step ladder with very large standing surface
- Step Ladder with retractable safety bar including tool tray
- Robust workbench with large work surface and tool tray
- Use on its side as stable support table for large sheet material, wood, pipes etc.

📦 Max. weight 150 kg



Technical information	
Working height workbench:	90 cm
Dimensions workbench:	60 x 50 cm
Working height step ladder:	230 cm
Dimensions step:	45 x 50 cm
Max. weight:	150 kg
Product weight without accessories:	14,1 kg
Product dimensions (L x W x H):	107 x 69 x 15 cm
Delivery includes	
	Transformer
Certificates	
	CE, RoHS, PAHS, REACH
Logistical data	
Item-No.:	7062245
EAN:	4050255027129
HS code:	7616 9990 990
Dimensions unit packaging (L x W x H):	70 x 17 x 107,5 cm
Gross weight unit packaging:	16,1 kg
Quantity / Export carton:	1 pcs
Dimensions export carton (L x W x H):	70 x 17 x 107,5 cm
Gross weight export carton:	16,1 kg
Quantity / Pallet:	10 pc
20'GP:	240 pcs
40'GP:	500 pcs
40'HC:	570 pcs



www.batavia.eu

# BATÁVIE

## 4GRILL BARREL GRILL-SMOKER-COOKER-FIREPIT

SVĚTOVÁ NOVINKA  
4 FUNKCE:  
GRIL-UDÍRNA-OHNIŠTĚ  
STOHOVATELNÝ SUD

UVEDENO NA TRH  
V ROCE 2014



### 4-IN-1 Oil drum: grilling, smoking, slow cooking & fireplace

Get more out of life with this 4Grill – barbecuing, cooking and smoking outside all year round on this cool BBQ barrel, which combines everything you are looking for!

Grilling is HOT! The grilling of meat, fish and vegetables over fire and coals gives you the feeling of freedom. Invite your family and friends to enjoy it with you.

The 4Grill has a robust design and is of high quality. With 4 functions it is perfect for outdoor living and also simple and compact to store. The 4Grill can easily be carried along to wherever you need it; simply take it from the garden to the beach or the camp site. The 4Grill comes complete with accessories enabling you to immediately start grilling, smoking or cooking. Accessories include, amongst others, chrome-plated grill rack and cross incl. 4 meat hooks, coal dish and heat shield, water tray, fire cylinder, handles and lid with thermometer as well as 2 design stickers.

The height of the barrel is 91.6 cm (max.) and 36.6 cm (min.) with a diameter of 56.8 cm. The height is easily adjusted as desired, thanks to the 3 loose segments of the barrel, which lock into each other. Once mounted, the 4Grill can easily be moved to another position, thanks to the safety handles.

The temperature control on the lid allows you to observe the current heat within the BBQ.

Late in the evening, when it's colder outside, you can use the 4Grill as practical open fire place.

# 4GRILL

POWERED BY BATÁVIA



Dimensions: Ø 56.8 x 91.6 cm

### Design your 4Grill

To give the 4Grill a personal touch you can create your own design by adding special thermal stickers to the barrel – you can choose from the multiple designs which we have standard available.

Choose and order your thermal stickers on our website [www.4grill.design](http://www.4grill.design).

YOU are in charge!



# BATÁVIE

## ZAPALOVAČ MAXXFIRE 8V

SVĚTOVÁ NOVINKA  
BEZDRÁTOVÝ ZAPALOVAČ  
8V NA DŘEVĚNÉ UHLÍ A  
BRIKETY

UVEDENO NA  
TRH  
2016

# FROM 8 VOLT INTO A 600 °C HOT BBQ

**MAXXFIRE**  
BBQ Lighter – 8 V Li-Ion



**BATÁVIA**  
TOOLS TO BUILD

ITEM-NO.: 7062935 [www.batavia.eu](http://www.batavia.eu)

# BATÁVIA

**NO CHEMICALS!** **NO GAS!** **NO FLAMES!**

push in to extend the heating coils

extendable heating coils



## MAXXFIRE

Safe & easy BBQ lighter

- ▶ Safe, fast and easy to use
- ▶ No flames - just heat
- ▶ Blazing coals within seconds
- ▶ Cordless for high mobility
- ▶ Integrated fan to provide the coals with air

max. **600 °C**

**8 V**

DESIGN REGISTERED. All rights reserved by Batavia GmbH.  
Technical data and information provided in this document shall be considered non-binding and may be subject to change without notice.

**2** YEAR WARRANTY  
ANS DE GARANTIE  
JAHRE GARANTIE  
JAZAR GARANTIE



[WWW.BATAVIA.EU](http://WWW.BATAVIA.EU)

# BATÁVIA

TOOLS TO BUILD

# BATÁVIE

## DOTYKOVÝ 12V VRTAČKA

PRVNÍ  
BEZDRÁTOVÁ  
VRTAČKA NA SVĚTĚ  
S DOTYKOVÝM  
SPÍNAČEM

UVEDENO NA  
TRH  
2014

**THE WORLDS MOST ADVANCED DRILL**



10mm Chuck  
17 + 1 Stage Clutch  
Super Bright LED  
TOUCH Activation  
2Ah or 4Ah Lithium-ion Battery

2 Speed Side Action Gearbox  
Ergonomic Grip

Technical data:	Cordless Impact Driver	Technical data:	Cordless Drill
Voltage:	100 - 240V - 50/60Hz	Voltage:	100 - 240V - 50/60Hz
Frequency:		Frequency:	0.5 - 10mm
Toolholder:	1/2" internal hexagon	No load speed I:	$n_0$ -Lo = 0 - 440 / min
No load speed:	0 - 2,300 / min	No load speed II:	$n_0$ -HI = 0 - 1,450 / min
Max. torque:	100 Nm	Max. torque:	32 Nm
Weight:	2 kg	Drill capacity in wood:	25 mm
Impact rate:	0 - 3,000 / min	Drill capacity in metal:	13 mm
Item-No:	7062039	Clutch stages:	17 + 1
12V Professional Johnson Hi-Performance Grade Motor		Weight:	1.9 kg
Item-No:	7061997		
Extra accessories		12V Professional Matsushita Hi-Performance Grade Motor, incl. 2Ah Samsung Battery and 30 min. Fast-charger.	
Battery 12V Li-ion - 2Ah:			
Charging time:	30 min		
Item-No:	7062038		
Battery 12V Li-ion - 4Ah:			
Charging time:	60 min		
Item-No:	7061992		
Charger:			
Item-No:	7062048		

**BATAVIA**  
**909**  
**TOUCH**

 batavia.eu  
Batavia GmbH | Blankenstein 180 | NL-7943 PE Moppel

**THE WORLDS MOST  
ADVANCED DRILL**



13mm Chuck  
17 + 1 Stage Clutch  
Super Bright LED  
TOUCH Activation  
2Ah or 4Ah Lithium-ion Battery

2 Speed Side Action Gearbox  
Ergonomic Grip

**BATAVIA**

# BATÁVIE

MAXXWEAR – FUNKČNÍ HODINKY

PRVNÍ NA SVĚTĚ  
NÁSTROJOVÝ NÁRAMEK

UVEDEN NA TRH  
2015

*Provedli jsme pouze testovací uvedení  
na trh v Austrálii, ne globální uvedení  
na trh.*



## MAXXWEAR Utility watch



SCHRAUBEN-  
SCHLÜSSEL  
8, 10, 13

PH2 BIT

T20 BIT

USB

FLASCHEN-  
ÖFFNER

BITHALTER

S6 BIT

GLAS-  
BRECHER



# BATÁVIE

## MAXXSAFE – ROZBÍJEČ AUTOMOBILOVÝCH OKEN

PRVNÍ NA SVĚTĚ  
ROZBÍJEČ OKEN PRO BEZPEČNÝ ÚNIK,  
KTERÝ FUNGUJE JAK NA VODĚ, TAK I  
POD VODOU

UVEDENO NA TRH  
V ROCE 2022

**LIFE SAVING TOOL**

**MAXXSAFE**  
Car window breaker

**BATÁVIA**  
TOOLS TO BUILD

ITEM-N2.1.700000

www.batavispower.com

The image shows a Maxxsafe car window breaker being used on a car window. The tool is orange and black, and the window is shattered. The background is dark with the text 'LIFE SAVING TOOL' in large yellow and white letters. Below that, 'MAXXSAFE Car window breaker' is written in white. At the bottom, the Batavia logo and website are visible.

**100% FUNCTIONAL UNDER WATER**

Water resistance has NO influence on the impact force unlike with normal lifehammers, which cannot be operated reliable underwater

**MAXXSAFE**  
Car escape tool

The risk of a car accident and crashing into water is a serious threat, weather circumstances, missing crash barriers along bodies of water, or just simple car accidents cause numerous drownings per year. When you're in your car, submerged under water, the standard escape hammers don't work. On top of that, most common tools are used incorrectly or can't be found in moments of panic. The new Maxxsafe® provides a significant solution so you can drive around safely.

**10.000 CARS EVERY YEAR**  
The amount of car accidents with submerged vehicles.

**99% OF CARS SINK FORWARD**  
Due to the engine in the front.

**1 IN 5 RESULTED IN FATALITIES**  
Around 1 in 5 of these events resulted in multiple fatalities with between 2 and 5 victims

**30% NEED PROFESSIONAL HELP TO ESCAPE**  
Only 70% of the cars which crash into the water manage to escape on their own.

**EXPERIENCE THE FEELING**  
CHECK OUT THE VIDEOS

MYTHBUSTERS TopGear

The image shows a Maxxsafe car escape tool, which is orange and black. It is shown in a dark environment, possibly inside a car. The text '100% FUNCTIONAL UNDER WATER' is prominent at the top right. Below it, there is a paragraph of text explaining the tool's benefits. The Maxxsafe logo and 'Car escape tool' are in the middle left. On the right, there are several statistics and a call to action. At the bottom right, there are logos for Mythbusters and TopGear.



# BATÁVIE

## BLUCAVE – ŘÍDÍCÍ SYSTÉM

JEDINEČNÝ PRVNÍ  
SYSTÉM SKIN NA 1  
OVLADAČI

ZAHÁJEN V  
ROCE 2011

### CONTROLLERS

#### AC CONTROLLER



Storage Dock  
ToolBod & Controller



FEATURES	
MODEL NUMBER	CP-1500-1
POWER SUPPLY	230V ~ 50Hz
POWER	Up to 1,500W
DUAL SAFETY INTERLOCK	✓
SOFT GRIP	✓
VARIABLE SPEED	✓
HAND GUARD	✓
POWER LIGHT	Blue LED
POWER CABLE	1.8 meters
SWIVEL CORD	✓
LOCK-ON SPEED DIAL SWITCH	✓
STORAGE DOCK	Included

SPECIFICATIONS	
UNIT WEIGHT	0.8 kg
UNIT DIMENSIONS	245 L x 150 W x 85 H mm
CARTON QUANTITY	6 pcs
CARTON WEIGHT	5.0 kg
CARTON DIMENSIONS	475L x 195 W x 265 H mm
UNIT BARCODE	4050255011784
ARTICLE NUMBER	7060546
20FT CONTAINER QUANTITY	7,236 pcs
40FT CONTAINER QUANTITY	14,730 pcs
ARTICLE AND BARCODE UK	7060544 / 4050255011746

#### SUGGESTED ADVERTISING INFORMATION/FEATURES

1.8m power cord, comfort soft grip handle  
Dual safety interlock to securely attach powered ToolBods (Patent Pending)  
Optimum versatility with both trigger action & pre-set variable speed  
Added safety with hand protector  
Blue LED "power on" indicator  
Swivel cord storage  
Controller clicks onto multiple powered ToolBods  
Conveniently slides into the carry cabinet  
Space & Cost saving



### CONTROLLERS

#### DC Li-ion CONTROLLER



Storage Dock  
ToolBod & Controller



FEATURES	
MODEL NUMBER	CC-18Li-1
POWER SUPPLY	230V - 50Hz
POWER	18V 1,300mAh
DUAL SAFETY INTERLOCK	✓
SOFT GRIP	✓
VARIABLE SPEED	✓
FORWARD/REVERSE	✓
COMPLETE WITH CHARGER	3-5 Hours
MAGNETIC HOLDER	✓
CARRYING STRAP	✓
STORAGE DOCK	Included

SPECIFICATIONS	
UNIT WEIGHT	0.9 kg
UNIT DIMENSIONS	255L x 130 W x 105 H mm
CARTON QUANTITY	4 pcs
CARTON WEIGHT	4.0 kg
CARTON DIMENSIONS	290 L x 280 W x 240 H mm
UNIT BARCODE	4050255011708
ARTICLE NUMBER	7060542
20FT CONTAINER QUANTITY	4,244 pcs
40FT CONTAINER QUANTITY	8,960 pcs
ARTICLE AND BARCODE UK	7060522/4050255011302

#### SUGGESTED ADVERTISING INFORMATION / FEATURES

Dual safety interlock to securely attach cordless ToolBods (Patent Pending)  
Controller clicks onto multiple cordless ToolBods  
Maximum usability with trigger operated speed  
Forward/Reverse operation  
Comfort soft grip handle  
Conveniently slides into the carry cabinet  
Space & Cost saving



An exciting new range..

**RANDOM ORBITAL SANDER TOOLBOD**  
430 W, 125 mm sanding base. Hook and clip, variable speed and dust extraction with bag.  
Item-No. 7060539

**FINISHING SANDER TOOLBOD**  
1/3 sheet sanding base 187 x 90 mm, 150 W, variable speed.  
Abrasive attachment by stable metal clamps.  
Item-No. 7060538

**JIGSAW TOOLBOD**  
500 W, wood max. cut: 55 mm. With dust port, transparent blade guard, can fit U2 tank blades.  
Item-No. 7060532

**18 VOLT LI-ION CONTROLLER CORDLESS SYSTEM (DC)**  
Innovative Li-Ion battery system. The controller clicks onto multiple DC toolbods within seconds, and supplies the Audio Module with power for portable usage.  
All battery toolbods and controller include special storage docks for easy sliding and storage into the carry cabinets. Safe, secure, clean and organised storage.

**CONTROLLER 18V FOR BATTERY TOOLBODS AND AUDIO MODULE**  
Power 18V, 1.2Ah. Double safety lock, forward/reverse switch, soft grip handle for relaxed working. Includes 3hrs. Charger, magnetic holder and carrying strap.  
Item-No. 7060542

**DRILL DRIVER TOOLBOD**  
24V, forward/reverse switch and variable speed, 10 mm keyless chuck integrated bit holder.  
Item-No. 7060536

**LED FLASHLIGHT TOOLBOD**  
Flashlight with pivoting head.  
LED power 1 Watt.  
Item-No. 7060533

**LI-ION 18V FAST CHARGER**  
1 hr Charger for 18V Li-Ion Controller, fits on to the Storage dock of the controller.  
Item-No. 7060540

#### ACCESSORIES

**IMPACT DRILL ACCESSORIES KIT**  
05 PCS  
Item-No. 7061219

**ANGLE GRINDER ACCESSORIES KIT**  
06 PCS  
Item-No. 7061218

**RECIPROCATING SAW ACCESSORIES KIT**  
06 PCS  
Item-No. 7061222

**RANDOM ORBITAL SANDER ACCESSORY KIT**  
13 PCS  
Item-No. 7061223

**FINISHING SANDER ACCESSORIES KIT**  
13 PCS  
Item-No. 7061220

**JIGSAW ACCESSORIES KIT**  
15 PCS  
Item-No. 7061221

**DRILL DRIVER ACCESSORIES KIT**  
31 PCS  
Item-No. 7061224

# BATÁVIE

## BLUCAVE – AUDIOZONE – NÁSTROJOVÁ SKŘÍŇKA S REPRODUKTOREM

PRVNÍ TOOLBOX NA SVĚTĚ S  
BLUETOOTH REPRODUKTOREM

UVEDENO NA  
TRH V ROCE  
2012



### BOOSTERS

#### AUDIO MODULE



Made for iPod iPhone



FEATURES	
MODEL NUMBER	BAM-5-1
POWER SUPPLY	120-230V AC to 12V DC
SPEAKER	6W
MADE FOR IPOD WORKS WITH IPHONE	✓
LCD DISPLAY	✓, with blue backlight
USB INPUT	Audio playback of MP3/WMA files
RADIO	FM with 5 preset memory stations
AUDIO JACK (LINE-IN 3.5mm)	✓
PIVOTING RUBBER ATENA	✓
PORTABLE POWER SUPPLY	Via BluCave DC Controller
PORTABLE	✓
WALL MOUNTABLE	Only to BluCave Rail

SPECIFICATIONS	
UNIT WEIGHT	5.1 kg
UNIT DIMENSIONS	398 L x 258 W x 525 H mm
CARTON QUANTITY	1
CARTON WEIGHT	5.5 kg
CARTON DIMENSIONS	408 L x 268 W x 535 H mm
UNIT BARCODE	4050255011487
CARTON BARCODE	7060531
20ft CONTAINER QUANTITY	420
40ft CONTAINER QUANTITY	900
ARTICLE AND BARCODE UK	7061228/4050255016215

**SUGGESTED ADVERTISING INFORMATION/BENEFITS**

Power can be provided from DC 18V Blucave Handles for portable applications. Runtime requirement is approx 2.5 hours, at middle volume level. USB input for audio playback of MP3/WMA files. Audio out connection for future Upgrade unit. Charge iPhone/iPod when connected to AC power (not 18V DC battery). Charge from USB port when connected to AC Power (not 18V DC battery). Clock display when unit is in Stand-by mode. 2xAAA Batteries (3V) to provide power for clock and FM preset memory when unit is not connected to AC outlet or 18VDC battery. Digital volume control with Levels 0..30.





### AUDIO ZONE

COMPACT Bluetooth™ SPEAKER

WORK WITH YOUR FAVOURITE MUSIC!



Touch controls

Powerful sound

Clicks in Carry Cabinet



- Bluetooth 4.0
- NFC
- Line-in
- Microphone
- Touch controls
- Stereo

Item-No: 7060531  
EAN: 4050255011487  
Quantity box: 4 pcs. in displaybox



ENJOY YOUR MUSIC!

